

DDIN[®]

DDIN PRODUCT CATALOG



UNIVERSAL STRINGING BLOCKS

DDIN Universal Stringing Blocks are low maintenance, versatile, and built for longevity making them a trustworthy option for your job. Designed to withstand tough conditions, these blocks feature a high-strength aluminum alloy frame and heavy-duty sealed ball bearings packed with synthetic aviation grease. DDIN Universal Stringing Blocks are available in two different gate styles and both can be mounted to a crossarm bracket, insulator bracket or suspended using a mounting attachment.

DNCB-1 UNIVERSAL STRINGING BLOCKS

- Gate Style: Spring loaded latch that can be operated with a hot stick
- High-strength aluminum alloy frame
- Heavy-duty sealed ball bearings packed with synthetic aviation grease
- 3 mounting options: Crossarm bracket, Insulator bracket, or suspended using a mounting attachment



Available Sheaves:



PART #	SHEAVE	SHEAVE WIDTH	SHEAVE DIAMETER	FRAME OPENING	MAX CABLE DIAMETER	WLL	WEIGHT
DNCB-1AL	Aluminum	3"	7"	3-3/4" H x 3-1/8" W	2-1/4"	2,500 lbs.	8.5 lbs.
DNCB-1DI	Ductile Iron	3"	7"	3-3/4" H x 3-1/8" W	2-1/4"	2,500 lbs.	13.5 lbs.
DNCB-1LS	Urethane Lined	3"	7"	3-3/4" H x 3-1/8" W	2"	2,500 lbs.	9 lbs.

DNCB-2 UNIVERSAL STRINGING BLOCKS

- Gate Style: Hinged Flip Top
- Gate is retained with a ball detent pin
- High-strength aluminum alloy frame
- Heavy-duty sealed ball bearings packed with synthetic aviation grease
- 3 mounting options: Crossarm bracket, Insulator bracket, or suspended using a mounting attachment



Available Sheaves:



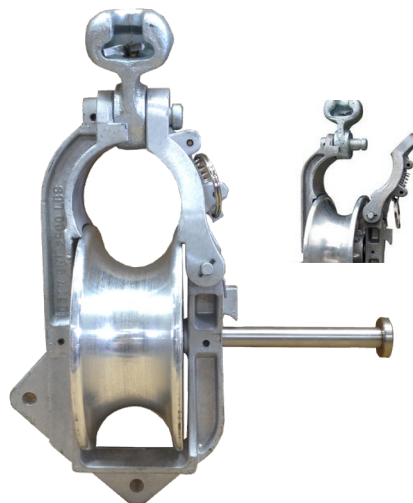
PART #	SHEAVE	SHEAVE WIDTH	SHEAVE DIAMETER	FRAME OPENING	MAX CABLE DIAMETER	WLL	WEIGHT
DNCB-2AL	Aluminum	3"	7"	3-3/4" H x 3-1/8" W	2-1/4"	2,500 lbs.	8.5 lbs.
DNCB-2DI	Ductile Iron	3"	7"	3-3/4" H x 3-1/8" W	2-1/4"	2,500 lbs.	13.5 lbs.
DNCB-2LS	Urethane Lined	3"	7"	3-3/4" H x 3-1/8" W	2"	2,500 lbs.	9 lbs.

GROUNDING UNIVERSAL BLOCKS

DDIN Universal Grounded Blocks feature a 5-1/8" ground stud installed through the frame. The grounding stud is offered on both the CB-1 and CB-2 universal blocks. These blocks maintain the same trusted features as the standard universal blocks: a high-strength aluminum alloy frame, heavy duty sealed ball bearings, and 3 versatile mounting options.

DNCB-1G GROUNDED UNIVERSAL BLOCKS

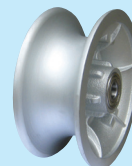
- Gate Style: Spring loaded latch that can be operated with a hot stick
- High-strength alloy frame
- Ground stud length: 5 1/8"
- Heavy-duty sealed ball bearings packed with synthetic aviation grease
- 3 mounting options: crossarm bracket, insulator bracket, or suspended using a mounting attachment



Available Sheaves:



Aluminum



Ductile Iron

PART #	SHEAVE	SHEAVE WIDTH	SHEAVE DIAMETER	FRAME OPENING	MAX CABLE DIAMETER	WLL	WEIGHT
DNCB-1GAL	Aluminum	3"	7"	3-3/4" H x 3-1/8" W	2-1/4"	2,500 lbs.	9 lbs.
DNCB-1GDI	Ductile Iron	3"	7"	3-3/4" H x 3-1/8" W	2-1/4"	2,500 lbs.	14 lbs.

DNCB-2G GROUNDED UNIVERSAL BLOCKS

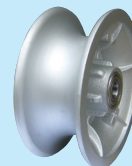
- Gate Style: Hinged Flip Top
- Gate is retained with a ball detent pin
- High-strength alloy frame
- Ground stud length: 5 1/8"
- Heavy-duty sealed ball bearings packed with synthetic aviation grease
- 3 mounting options: crossarm bracket, insulator bracket, or suspended using a mounting attachment



Available Sheaves:



Aluminum



Ductile Iron

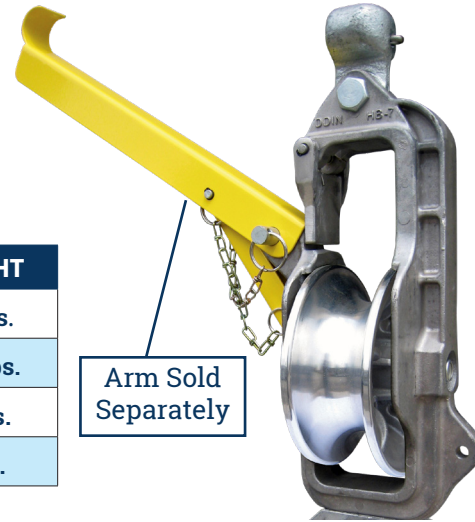
PART #	SHEAVE	SHEAVE WIDTH	SHEAVE DIAMETER	FRAME OPENING	MAX CABLE DIAMETER	WLL	WEIGHT
DNCB-2GAL	Aluminum	3"	7"	3-3/4" H x 3-1/8" W	2-1/4"	2,500 lbs.	9 lbs.
DNCB-2GDI	Ductile Iron	3"	7"	3-3/4" H x 3-1/8" W	2-1/4"	2,500 lbs.	14 lbs.

UNIVERSAL HELICOPTER BLOCKS

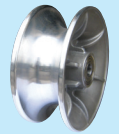
DNHB-7

- Gate Style: Heavy-duty spring-loaded
- High-strength aluminum alloy frame
- Arm is retained with ball detent pins
- Arm Length: 16" (Helicopter arm is sold separately)

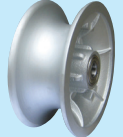
PART #	SHEAVE	WLL	WEIGHT
DNHB-7AL	Aluminum	2,500 lbs.	1.5 lbs.
DNHB-7DI	Ductile Iron	2,500 lbs.	16.5 lbs.
DNHB-7LS	Urethane Lined	2,500 lbs.	12 lbs.
DNHB-7ARM	Helicopter Arm Only	2,500 lbs.	3 lbs.



Available Sheaves:



Aluminum



Ductile Iron



Urethane Lined

MOUNTING BRACKETS

DDIN Mounting Brackets are designed for mounting the CB-Series Universal Stringing Blocks. These mounting brackets offer strength, safety and convenience, while also being lightweight.

CROSSARM BRACKETS

- Mounts any CB-Series distribution stringing block to a crossarm
- Quick release hook nut
- Allows the universal stringing block to be mounted at various angles

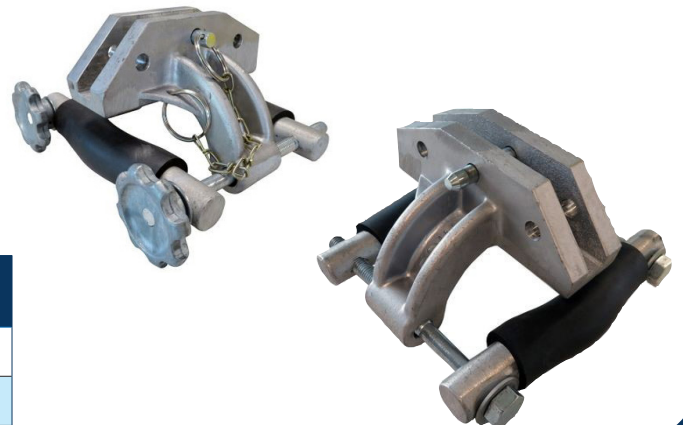
PART #	STYLE	CROSSARM SIZE	WEIGHT
DNAB-1	Straight Ball Detent Pin	4-1/2" x 5-1/2"	5.5 lbs.
DNAB-2	L-Shaped Locking Detent Pin	4-1/2" x 5-1/2"	5.5 lbs.
DNAB-6	Straight Ball Detent Pin	6-1/4" x 7"	6 lbs.



INSULATOR BRACKETS

- Through-hole mounting bracket allows CB-Series blocks to clamp securely to a tie top insulator
- Two style options allow user to tighten each bolt independently
- Contoured rubber coated brackets
- 5" opening

PART #	STYLE	MAX OPENING SIZE	WEIGHT
DNIB-1	3/4" Hex Head	5"	4.12 lbs.
DNIB-1H	Hand Knob	5"	5.12 lbs.



MOUNTING ATTACHMENTS

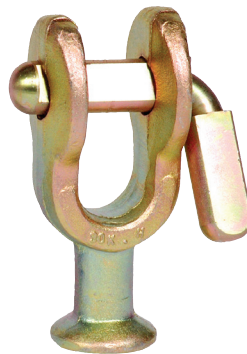
MOUNTING ATTACHMENTS



DNT12



DN14



DN14A



DN15

PART #	STYLE	ADDITIONAL DETAILS	WEIGHT
DNT12	Safety Hook	Galvanized ball safety hook with spring-loaded latch *USE ONLY WITH 7" BLOCKS*	1 lb.
DN14	Ball Clevis	Galvanized standard ball clevis with a removeable pin. The pin is retained with a humpback cotter pin.	1 lb.
DN14A	Ball Clevis	Zinc plated standard ball clevis with a non-removeable locking pin.	1 lb.
DN15	Y - Ball Clevis	Galvanized Y-ball clevis with a curved retention bolt. The bolt is retained with a hex nut and humpback cotter pin.	1.75 lbs.
REPLACEMENT PARTS			
DN14-PIN	Bolt & Cotter Pin	Replacement straight bolt and humpback cotter pin. For use with DN14 ball clevis.	--
DN15-PIN	Curved Bolt, Nut & Cotter Pin	Replacement curved bolt, nut and humpback cotter pin. For use with DN15 Y-ball clevis.	--
DN1415	Humpback Cotter Pin Only	Replacement humpback cotter pin only	--



STRINGING BLOCKS

DDIN Transmission Stringing Blocks are constructed of high-strength aluminum alloy, making them lightweight, strong and durable. The urethane lined sheaves prevent damage to the conductor and the anti-friction ball bearings packed with synthetic aviation grease make these blocks resistant to extreme conditions.

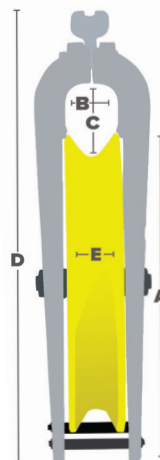
STANDARD STRINGING BLOCKS

- Constructed of aluminum alloy, lightweight and durable
- Urethane lined sheave
- Anti-friction bearings packed with synthetic aviation grease
- Lifting bars located at the center and at the bottom of the blocks
- Large throat opening allows for the passage of most sleeves and connectors

PART #	A	B	C	D	E	WLL	WEIGHT
DNSB12U	12"	2-1/2"	4"	21-7/8"	1-3/8"	12,000 lbs.	20 lbs.
DNSB16U	16"	2-1/2"	5-1/4"	26-1/2"	1-3/8"	12,000 lbs.	29.5 lbs.
DNSB22U	22"	3-1/8"	5-5/8"	31-9/16"	2"	12,000 lbs.	52 lbs.
DNSB28U	28"	3-1/4"	5-11/16"	38-3/4"	2-3/8"	12,000 lbs.	62 lbs.

WIDE STRINGING BLOCKS

- Wider version of the Standard Stringing Block
- "V-Groove" urethane lined wide-throat sheave
- Designed to improve the installation of T2® and VR2® conductors
- Constructed of aluminum alloy, lightweight and durable
- Anti-friction bearings packed with synthetic aviation grease
- Lifting bars located at the center and at the bottom of the blocks



PART #	A	B	C	D	E	WLL	WEIGHT
DNSBW16U	16"	4"	5-3/4"	26-3/4"	3-1/4"	12,000 lbs.	40.5 lbs.
DNSBW22U	22"	4"	5-1/2"	32-1/2"	3"	12,000 lbs.	62 lbs.
DNSBW28U	28"	4"	5-1/2"	38-3/4"	3-1/4"	12,000 lbs.	71.5 lbs.
DNSBW36U	36"	5"	6-1/2"	47-1/4"	3-5/8"	12,000 lbs.	145 lbs.
DNSBW42U	42"	5-3/8"	6-3/8"	53"	4"	12,000 lbs.	168 lbs.



GROUNDING STRINGING BLOCKS

DDIN Grounded Stringing Blocks are assembled with a unique grounding attachment mounted directly to the axle. The 4-1/2" x 3/4" ground stud can accept virtually any ground clamp, while the dual heavy-duty springs keep the roller in constant contact with the conductor. These blocks maintain the same trusted features as DDIN's Standard Stringing Blocks including: urethane lined sheaves, anti-friction shielded ball bearings packed with aviation grease and a high-strength aluminum alloy frame.

GOLD STANDARD

GROUNDING STANDARD STRINGING BLOCKS

- **GOLD Standard** grounding attachment mounted to the frame
- 4-1/2" x 3/4" Ground stud accepts virtually any ground clamp
- Dual heavy-duty springs keeps the roller in constant contact with the conductor

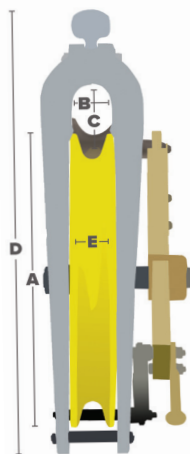
PART #	A	B	C	D	E	WLL	WEIGHT
DNSB12UG	12"	2-1/2"	4"	21-7/8"	1-3/8"	12,000 lbs.	30 lbs.
DNSB16UG	16"	2-1/2"	5-1/4"	26-1/2"	1-3/8"	12,000 lbs.	40.5 lbs.
DNSB22UG	22"	3-1/8"	5-5/8"	31-9/16"	2"	12,000 lbs.	75 lbs.
DNSB28UG	28"	3-1/4"	5-11/16"	38-3/4"	2-3/8"	12,000 lbs.	86 lbs.



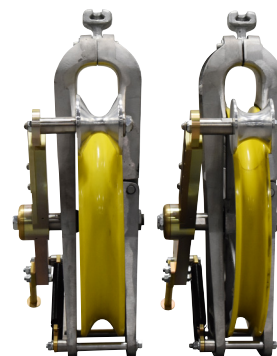
GOLD STANDARD

GROUNDING WIDE STRINGING BLOCKS

- Wider version of the Standard Stringing Block
- "V-Groove" urethane lined wide-throat sheave
- **GOLD Standard** grounding attachment mounted to the frame
- 4-1/2" x 3/4" Ground stud accepts virtually any clamp



PART #	A	B	C	D	E	WLL	WEIGHT
DNSBW16UG	16"	4"	5-3/4"	26-3/4"	3-1/4"	12,000 lbs.	54 lbs.
DNSBW22UG	22"	4"	5-1/2"	32-1/2"	3"	12,000 lbs.	85 lbs.
DNSBW28UG	28"	4"	5-1/2"	38-3/4"	3-1/4"	12,000 lbs.	94.5 lbs.
DNSBW36UG	36"	5"	6-1/2"	47-1/4"	3-5/8"	12,000 lbs.	224 lbs.
DNSBW42UG	42"	5 3/8"	6-1/2"	53"	4"	12,000 lbs.	248 lbs.



HELICOPTER BLOCKS

DDIN Helicopter Blocks are ideal for stringing multiple sizes of single overhead conductors where the pilot line will be flown in. A unique feature of these blocks is the exclusive "Snap Lock" fold away helicopter arm, which eliminates the need for removing pins to deploy or retract the fly arm.

STANDARD HELICOPTER BLOCKS

- Smooth and consistent operation
- "Snap Lock" fold away helicopter arm
- Spring-loaded side gate
- Constructed of aluminum alloy, lightweight and durable
- Anti-Friction Bearings packed with synthetic aviation grease

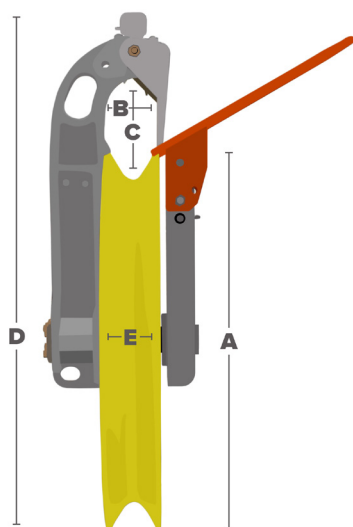
PART #	A	B	C	D	E	WLL	WEIGHT
DNSB22UH	22"	3-3/8"	7-1/2"	32-1/2"	2"	12,000 lbs.	62.5 lbs.
DNSB28UH	28"	3-1/2"	7-1/2"	39"	2-3/8"	12,000 lbs.	73.5 lbs.



WIDE HELICOPTER BLOCKS

- Wider version of the Standard Helicopter Stringing Block
- "V-Groove" urethane lined wide-throat sheave
- Designed to improve the installation of T2® and VR2® conductors
- Constructed of aluminum alloy, lightweight and durable
- Anti-friction bearings packed with synthetic aviation grease

PART #	A	B	C	D	E	WLL	WEIGHT
DNSBW22UH	22"	3-3/4"	7-1/2"	32-1/2"	3"	12,000 lbs.	71.5 lbs.
DNSBW28UH	28"	4"	7-1/2"	39"	3-1/4"	12,000 lbs.	78 lbs.
DNSBW36UH	36"	5-3/8"	10-1/2"	49-1/4"	4"	12,000 lbs.	158 lbs.
DNSBW42UH	42"	5-3/8"	10-3/4"	55"	4"	12,000 lbs.	192 lbs.

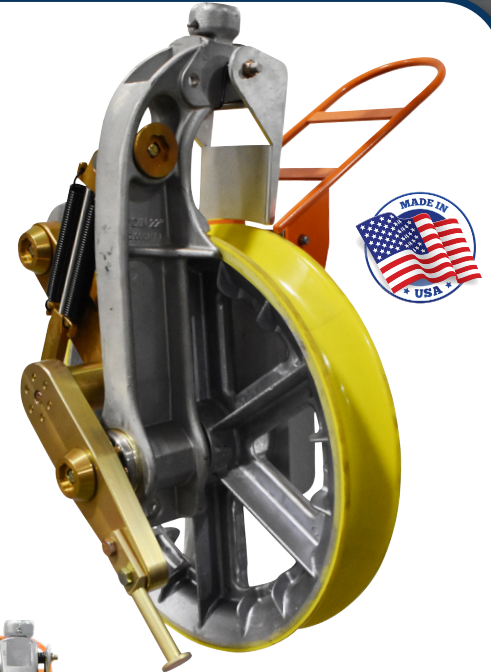


GROUNDING HELICOPTER BLOCKS

DDIN Grounded Helicopter Blocks combine the same quality features of both the standard grounded block and standard helicopter block. The unique "Snap Lock" fold away helicopter arm eliminates the need for removing pins to deploy or retract the fly arm, making the DDIN Grounded Helicopter Block ideal for stringing multiple sizes of single overhead conductors where the pilot line will be flown in. These blocks are assembled with a groundbreaking new Gold Standard Grounding Arm mounted directly to the axle.

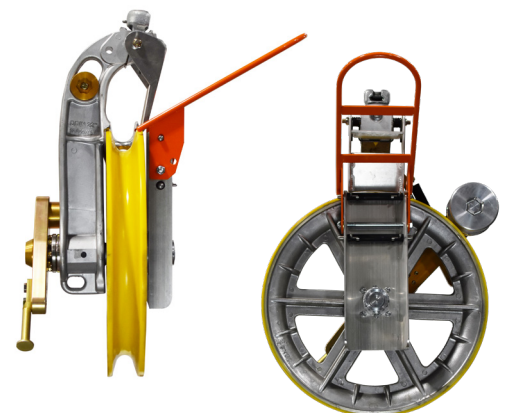
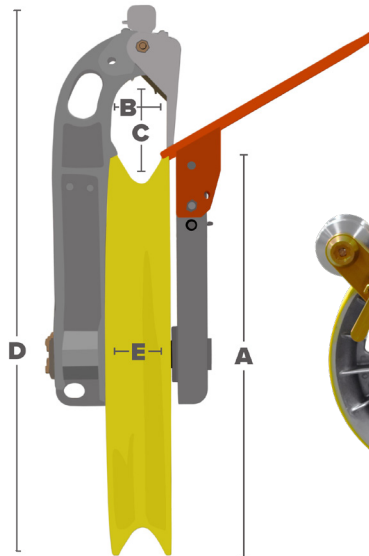
GOLD STANDARD GROUNDING ARM FEATURES

- **GOLD STANDARD**, patent pending
- Unique industry-leading design
- Heavy-duty, corrosion resistant
- Constructed of 100% precision machined aircraft-grade aluminum
- Limited arm travel to prevent over-extension
- Dual-axle sealed bearings
- Dual-spring design
- Tamper resistant



BLOCK FEATURES

- Smooth and consistent operation
- **GOLD Standard** grounding arm mounted directly to the axle (see features)
- 4 1/2" x 3/4" Ground stud accepts virtually any ground clamp
- Dual heavy-duty springs keeps the roller in constant contact with the conductor
- "Snap Lock" fold away helicopter arm
- Spring-loaded side gate
- Shielded bearings lubricated with synthetic aviation grease
- Innovative Contact Roller
- Innovative Anchor Point



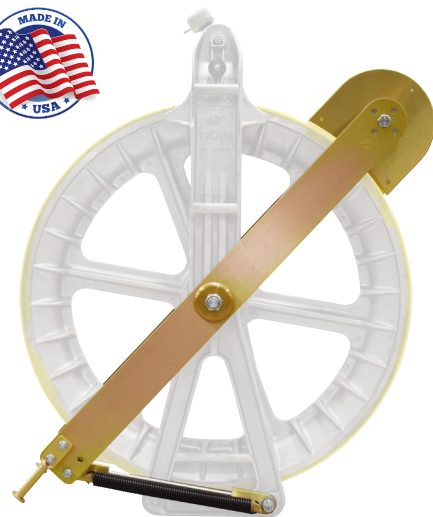
PART #	A	B	C	D	E	WLL	WEIGHT
STANDARD							
DNSB22UH-G	22"	3-3/8"	7-1/2"	32-1/2"	2"	12,000 lbs.	82 lbs.
DNSB28UH-G	28"	3-1/2"	7-1/2"	39"	2-3/8"	12,000 lbs.	94 lbs.
WIDE							
DNSBW22UH-G	22"	3-3/4"	7-1/2"	32-1/2"	3"	12,000 lbs.	92 lbs.
DNSBW28UH-G	28"	4"	7-1/2"	39"	3-1/4"	12,000 lbs.	102 lbs.

GROUNDING ATTACHMENTS

GOLD STANDARD

GROUNDING ATTACHMENTS

- Mounts directly to the axle of the stringing block (only compatible with DDIN blocks)
- Uses a heavy-duty spring assembly to keep the roller in constant contact with the conductor
- 4-1/2" x 3/4" Ground stud can accept virtually any clamp



DNBGV42

PART #	APPLICATION	WEIGHT
DNBG12	Use with DNSB12U	10 lbs.
DNBG16	Use with DNSB16U	11 lbs.
DNBG22-28	Use with DNSB22U & DNSB28U	22 lbs.
DNBGV16	Use with DNSBW16U	13.5 lbs.
DNBGV22-28	Use with DNSBW22U & DNSBW28U	23 lbs.
DNBGV36	Factory Install Only - Use with DNSBW36U	78 lbs.
DNBGV42	Factory Install Only - Use with DNSBW42U	80 lbs.

UNIVERSAL GROUNDING ATTACHMENT

- Mounts on any 12" through 36" stringing block with a standard ball socket
- Roller has 4 mounting locations to adjust for block size used
- Accommodates all conductor sizes
- Spring-loaded design to maintain constant contact with the conductor
- Mesh grips and swivels can pass through the roller



PART #	DESCRIPTION	WIRE CAPACITY	WEIGHT
DN12-36	Fits 12" - 36"	0.198" - 2.5"	13 lbs.

UPLIFT & UPLIFT/HOLD-DOWN BLOCKS

Designed to be used for specialty applications, DDIN Uplift & Uplift/Hold-Down blocks are constructed of high strength components.

UPLIFT/HOLD DOWN BLOCK

- High-strength cast iron frame
- Holds down the pulling line or conductor in order to combat the cable from rising out of the stringing block groove
- Can be used to lower conductor for inspection or other work
- Tandem position to reduce conductor stress
- Safety Factor: 5:1



PART #	SHEAVE	SHEAVE WIDTH	SHEAVE DIAMETER	MAX CABLE DIAMETER	WLL	WEIGHT
DNUL-7L	Urethane Lined	3"	7"	2"	3,500 lbs.	25.5 lbs.

UPLIFT BLOCK

- Used for uplift conditions
- High-strength aluminum alloy frame
- Side gate locks closed with a spring plunger

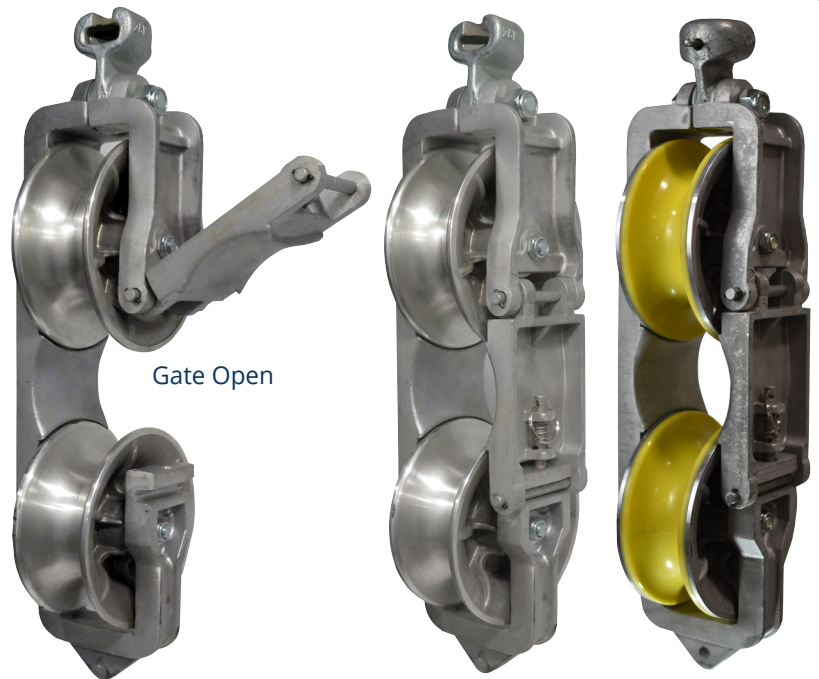
Available Sheaves:



Aluminum

Ductile Iron

Urethane Lined



Gate Open

PART #	SHEAVE	SHEAVE WIDTH	SHEAVE DIAMETER	MAX CABLE DIAMETER	WLL	WEIGHT
DNCB-77	Aluminum	3"	7"	2-1/4"	2,500 lbs.	15.5 lbs.
DNCB-77DI	Ductile Iron	3"	7"	2-1/4"	2,500 lbs.	25 lbs.
DNCB-77LS	Urethane Lined	3"	7"	2"	2,500 lbs.	16.5 lbs.

RADIUS BLOCKS

DDIN Radius Blocks are used in place of full diameter blocks. Lightweight and durable, they rotate freely from a vertical to a horizontal position when used on a corner structure. DDIN Radius Blocks have a 5:1 safety factor.

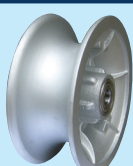
24" RADIUS BLOCKS

- Lightweight and durable
- Used in place of full diameter stringing blocks
- Rotates freely from a vertical to a horizontal position for use on corner structures
- Sealed Bearings

Available Sheaves:



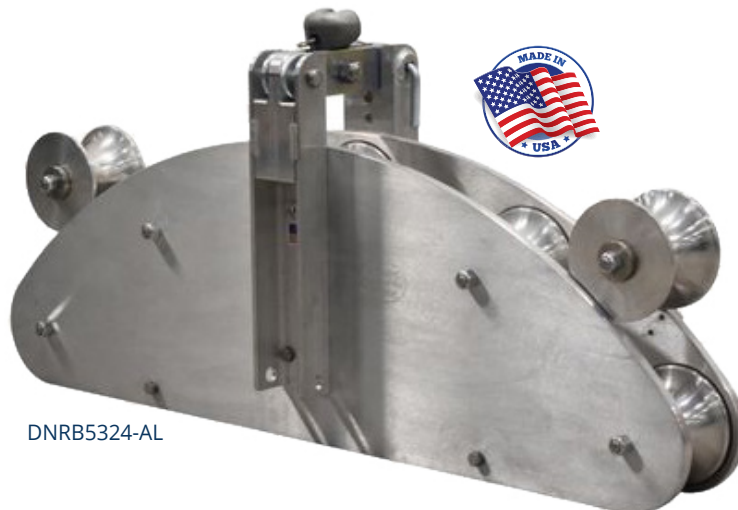
Aluminum



Ductile Iron



Urethane Lined



DNRB5324-AL

PART #	SHEAVE	SHEAVE WIDTH	SHEAVE DIAMETER	CABLE DIAMETER	DIMENSIONS	WLL	WEIGHT
DNRB5324-AL	Aluminum	3-1/2"	5"	2-3/4"	19" H x 40" L	4,000 lbs.	72 lbs.
DNRB5324-DI	Ductile Iron	3-1/2"	5"	2-3/4"	19" H x 40" L	4,000 lbs.	88 lbs.
DNRB5324-LS	Urethane Lined	3-1/2"	5"	2-1/2"	19" H x 40" L	4,000 lbs.	74 lbs.

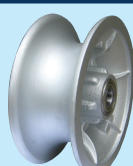
22" RADIUS BLOCKS

- Lightweight and durable
- Used in place of full diameter stringing blocks
- Rotates freely from a vertical to a horizontal position for use on corner structures
- Sealed Bearings

Available Sheaves:



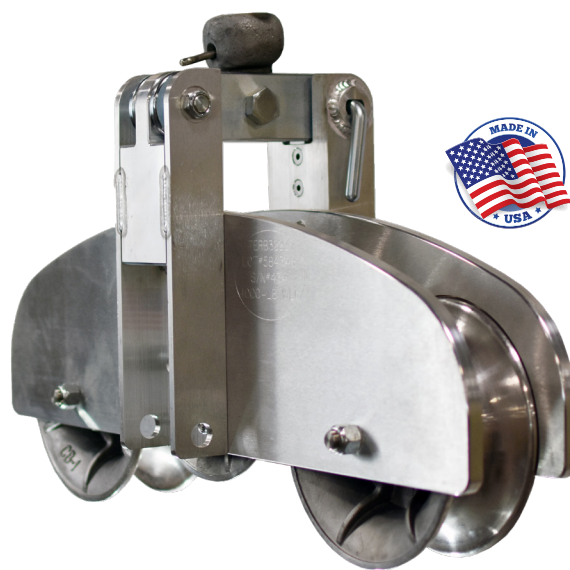
Aluminum



Ductile Iron



Urethane Lined



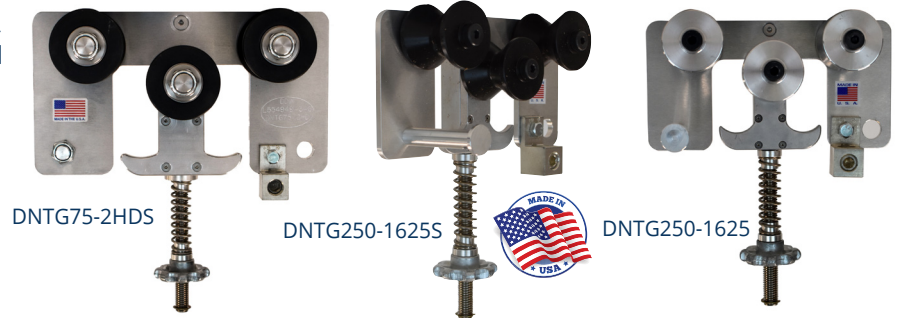
PART #	SHEAVE	SHEAVE WIDTH	SHEAVE DIAMETER	CABLE DIAMETER	DIMENSIONS	WLL	WEIGHT
DNRB3222-AL	Aluminum	3"	7"	2-1/4"	16" H x 23-1/2" L	4,000 lbs.	30 lbs.
DNRB3222-DI	Ductile Iron	3"	7"	2-1/4"	16" H x 23-1/2" L	4,000 lbs.	43 lbs.
DNRB3222-LS	Urethane Lined	3"	7"	2"	16" H x 23-1/2" L	4,000 lbs.	32 lbs.

TRAVELING GROUNDS

DDIN Traveling Grounds are an important component of every conductor stringing project. They maintain a positive contact from conductor to ground through the use of ground wire.

STANDARD TRAVELING GROUNDS

- Reversible ground stud accommodates most ground clamps
- Adjustable spring-loaded center roller maintains constant pressure on the conductor



PART #	APPLICATION	ROLLER	ROLLER SIZE	CABLE CAPACITY	WEIGHT
DNTG250-1625	Distribution	Aluminum	2-1/4"	1/4" to 1-5/8"	4.75 lbs.
DNTG250-1625S	Distribution	Steel	2-1/4"	1/4" to 1-5/8"	7.725 lbs.
DNTG75-2HD	Transmission	Aluminum	3"	3/4" to 2"	10.5 lbs.
DNTG75-2HDS	Transmission	Steel	3"	3/4" to 2"	16.165 lbs.

T2® VR2® TRAVELING GROUNDS

- Engineered specifically for T2® wire
- Reversible ground stud accommodates most ground clamps
- Adjustable spring-loaded center roller maintains constant pressure on the conductor

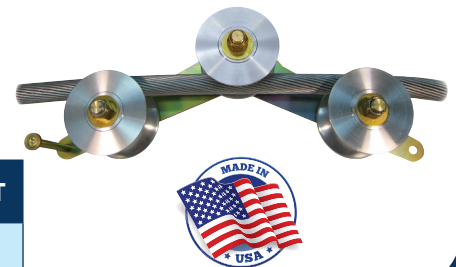


PART #	APPLICATION	ROLLER	ROLLER SIZE	CABLE CAPACITY	WEIGHT
DNTG550	T2®	Aluminum	5-1/2"	T2® 4/0 – 556	62 lbs.
DNTG80	T2®	Aluminum	8"	T2® 795 - 1113	92 lbs.

TORSION SPRING TRAVELING GROUND

- Torsion spring permits passage of splices and swivels
- Two positions of adjustment to set ideal tension on the conductor
- Oil impregnated bronze bushings

PART #	APPLICATION	ROLLER	ROLLER SIZE	CABLE CAPACITY	WEIGHT
DN353	Transmission	Aluminum or Steel	5"	1.040" (795) – 2-1/2"	18 lbs.



SAGGING EQUIPMENT

CLIPPING HOOK

- High strength aluminum alloy casting
- Urethane lined
- Tamper-resistant galvanized shackle
- Proof tested
- Serialized and tagged with a durable nylon-reinforced synthetic tag
- Safety Factor: 5:1

PART #	DIMENSIONS	WLL	WEIGHT
DNS22-771	5-1/2" L x 6-1/4" W x 14-1/2" H	6,500 lbs	7.8 lbs.



SAG SCOPE

- Leveling feature for vertical and horizontal accuracy
- Mounts to wooden poles or steel structures
- 3 x 9 Power scope with cross-hairs
- Includes a padded, high-impact storage case

PART #	WEIGHT
DN724	26.25 lbs.



SAGWATCH

- Simply and accurately determines sag
- Water & shock resistant
- Antimagnetic

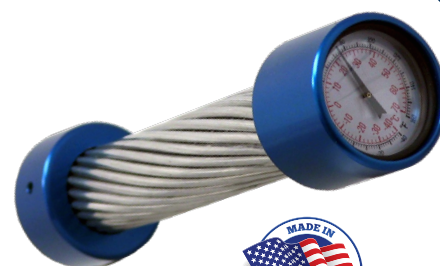
PART #	SCALE	CAPACITY	GRADUATIONS
DNSW-E	3rd Return	Sag up to 36'	Feet & Decimals
	5th Return	Sag up to 100'	Feet & Decimals
	Seconds	Seconds up to 30	Tenth of a second



SAGOMETER

- Encased in a section of aluminum conductor
- Helps to determine the temperature of the conductor being sagged
- Calibrated and certified
- Includes a padded, high-impact storage case

PART #	TEMP. RANGE	WEIGHT
DNCT40-160	-40° – 160°F	1 lb.



HANDLINE & RIGGING BLOCKS

RIGGING BLOCK

- The **Gold Standard** in rigging blocks
- Double-raced bearings packed with synthetic aviation grease
- Precision machined components reduce side-to-side play
- ASME B30 compliant
- Safety Factor: 5:1



PART #	SHEAVE	ROPE CAPACITY	WLL	WEIGHT
DNRB-6	6"	1"	5,000 lbs.	15 lbs.

TOWER BLOCK

- Aluminum body
- Open Head
- Proof tested and date stamped
- Shielded bearings packed with synthetic aviation grease
- Safety Factor: 5:1



PART #	SHEAVE	ROPE CAPACITY	WLL	WEIGHT
DNAHB-4	4"	7/8"	2,500 lbs.	6.7 lbs.
DNAHB-410	Replacement Detent Pin and Ring Only			

NYLON HANDLINE BLOCK

- Nylon body
- Open head design retained with thumb screw
- Safety Factor: 5:1



PART #	SHEAVE	HEAD STYLE	ROPE CAPACITY	WLL	WEIGHT
DNNHB-3	3"	Open	5/8"	1,000 lbs.	1.70 lbs.
DNNHB-3-LBA	Replacement Gate Screw & Lanyard				

ALUMINUM HANDLINE BLOCK

- Aluminum body
- Open head design retained with ball detent pin
- Shielded bearings packed with synthetic aviation grease
- Safety Factor: 5:1



PART #	SHEAVE	ROPE CAPACITY	WLL	WEIGHT
DNAHB-3	3"	5/8"	1,000 lbs.	2.40 lbs.
DNAHB-310	Replacement Detent Pin and Ring Only			

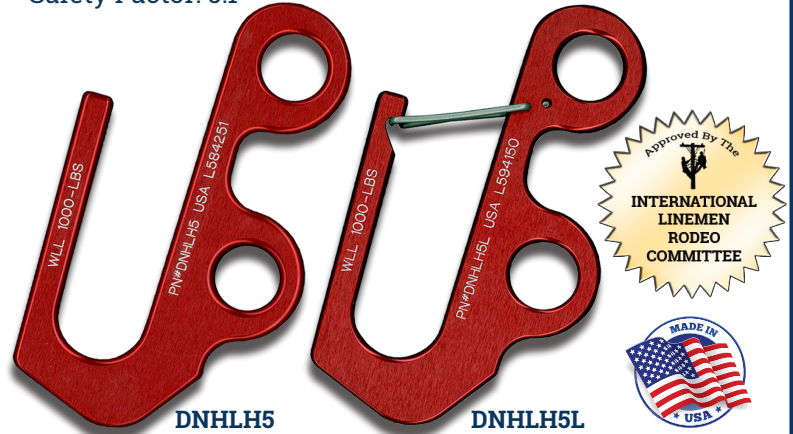


HANDLINE HOOKS



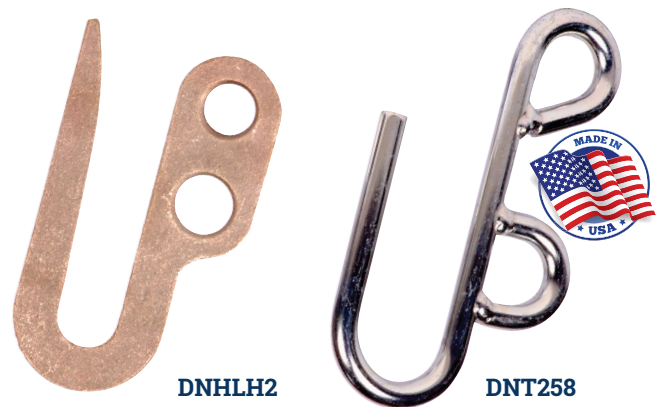
RATED ALUMINUM HANDLINE HOOKS

- Made from high-strength aluminum alloy
- Available with or without latch
- Safety Factor: 5:1



PART #	DIMENSIONS	WLL	WEIGHT
DNHLH5	7" x 4" x 1/2"	1,000 lbs	0.5 lb.
DNHLH5L	7" x 4" x 1/2"	1,000 lbs	0.5 lb.

STANDARD HANDLINE HOOKS



PART #	DESCRIPTION	DIMENSIONS	WEIGHT
DNHLH2	Bronze double-eye handline hook	5-1/2" x 3-1/8" x 1/4"	0.5 lb.
DNT258	Steel double-eye handline hook	6-3/4" x 3-7/8" x 7/16"	0.8 lb.

TRANSFORMER SLINGS

DDIN Transformer Slings are manufactured with Samson Rope, the worldwide leader in the development and manufacturing of high-performance rope. Each sling is proof tested and tagged by a certified rope specialist. All DDIN Transformer Slings have a 5:1 safety factor.

ADJUSTABLE TRANSFORMER SLINGS

- Adjustable eyes from 3" to 15"
- Proof tested
- Serialized and tagged with: part number, rope diameter, WLL, safe handling instructions and test date
- Includes durable mesh storage bag
- Safety Factor: 5:1



PART #	ROPE DIAMETER	LIFTING LEG LENGTH	COLOR	WLL	WEIGHT
DNTS12	1/2"	Adjustable 24" - 48"	Blue	1,225 lbs.	1 lb.
DNTS58	5/8"	Adjustable 24" - 48"	Red	2,160 lbs.	1.6 lbs.
DNTS34	3/4"	Adjustable 24" - 48"	Green	3,200 lbs.	2 lbs.



CAPACITOR BANK TRANSFORMER SLING

- Four adjustable legs provide easy balancing and level lifting of capacitor bank
- Legs are individually connected to the connecting link
- Proof tested
- Serialized and tagged with: part number, rope diameter, WLL, safe handling instructions and test date
- Includes durable mesh storage bag
- Safety Factor: 5:1



PART #	LEGS	ROPE DIAMETER	LIFTING LEG LENGTH	COLOR	WLL	WEIGHT
DNTS12CB-4-ADJ	4	1/2"	Adjustable 34" - 44"	Blue	5,000 lbs.	6.75 lbs.

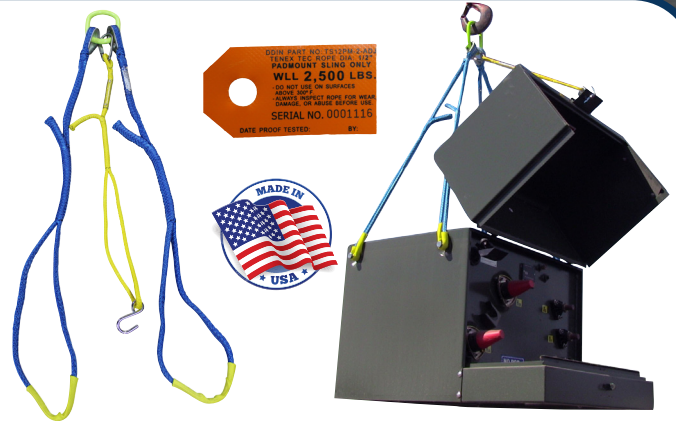


PADMOUNT TRANSFORMER SLINGS

DDIN Padmount Transformer Slings are manufactured with Samson Rope and designed for easy handling of single phase and three phase padmount transformers. Each sling is proof tested and tagged by a certified rope specialist. All DDIN Transformer Slings have a 5:1 safety factor.

SINGLE PHASE PADMOUNT TRANSFORMER SLINGS

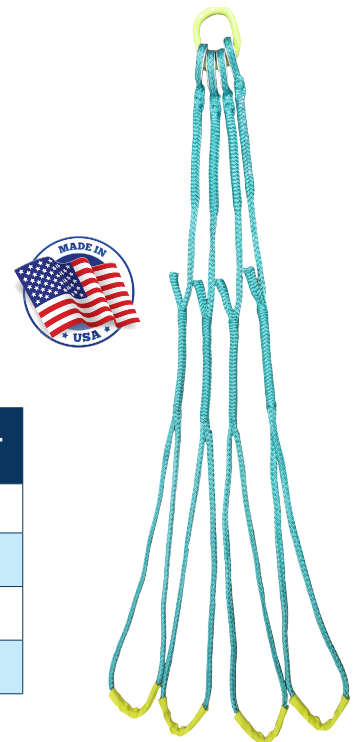
- Designed for safe and easy handling of single phase padmount transformers
- Available with adjustable or fixed-length legs
- Center leg designed for suspending the transformer lid
- Proof tested
- Serialized and tagged with: part number, rope diameter, WLL, safe handling instructions and test date
- Includes durable mesh storage bag
- Safety Factor: 5:1



PART #	LEGS	ROPE DIAMETER	LIFTING LEG LENGTH	CENTER DOOR LEG LENGTH	COLOR	WLL	WEIGHT
DNTS12PM-2-LL	2	1/2"	Fixed 4'	2' - 3'	Blue	2,500 lbs.	5 lbs.
DNTS12PM-2-ADJ-LL	2	1/2"	Adjustable 3' - 4"	2' - 3'	Blue	2,500 lbs.	5 lbs.
DNTS12PM-4-LL	4	1/2"	Fixed 4'	2' - 3'	Blue	2,500 lbs.	8 lbs.
DNTS12PM-4-ADJ-LL	4	1/2"	Adjustable 3' - 4'	2' - 3'	Blue	2,500 lbs.	8 lbs.

THREE PHASE PADMOUNT TRANSFORMER SLINGS

- Designed for safe and easy handling of three phase padmount transformers
- Available with adjustable or fixed-length legs
- Legs are individually connected to the upper link with thimbles in each eye
- Wear pads fitted on lower eyes
- Proof tested
- Serialized and tagged with: part number, rope diameter, WLL, safe handling instructions and test date



PART #	LEGS	ROPE DIAMETER	LIFTING LEG LENGTH	COLOR	WLL	WEIGHT
DNTS58PM-4	4	5/8"	Fixed 6'	Red	12,000 lbs.	16 lbs.
DNTS58PM-4-ADJ	4	5/8"	Adjustable 5' - 8'	Red	9,900 lbs.	17 lbs.
DNTS34PM-4	4	3/4"	Fixed 6'	Green	15,200 lbs.	22 lbs.
DNTS34PM-4-ADJ	4	3/4"	Adjustable 5' - 8'	Green	13,400 lbs.	23 lbs.

PADMOUNT TRANSFORMER SLINGS

HEAVY-DUTY THREE PHASE PADMOUNT TRANSFORMER SLING

- Legs assembled with thimbles in each eye and additional connecting links on the lower eyes
- Legs are individually connected to the upper link with thimbles in each eye
- Proof tested
- Serialized and tagged with: part number, rope diameter, WLL, safe handling instructions and test date
- Includes durable mesh storage bag
- Safety Factor: 5:1



PART #	LEGS	ROPE DIAMETER	LIFTING LEG LENGTH	COLOR	WLL	WEIGHT
DNTS34PM-4-HD	4	3/4"	66"	Green	15,700 lbs.	26 lbs.

SUPER-DUTY THREE PHASE PADMOUNT TRANSFORMER SLING

- Legs assembled with thimbles in each eye and additional connecting links on the lower eyes
- Legs are individually connected to the upper link with thimbles in each eye
- Proof tested
- Serialized and tagged with: part number, rope diameter, WLL, safe handling instructions and test date
- Includes durable mesh storage bag
- Safety Factor: 5:1

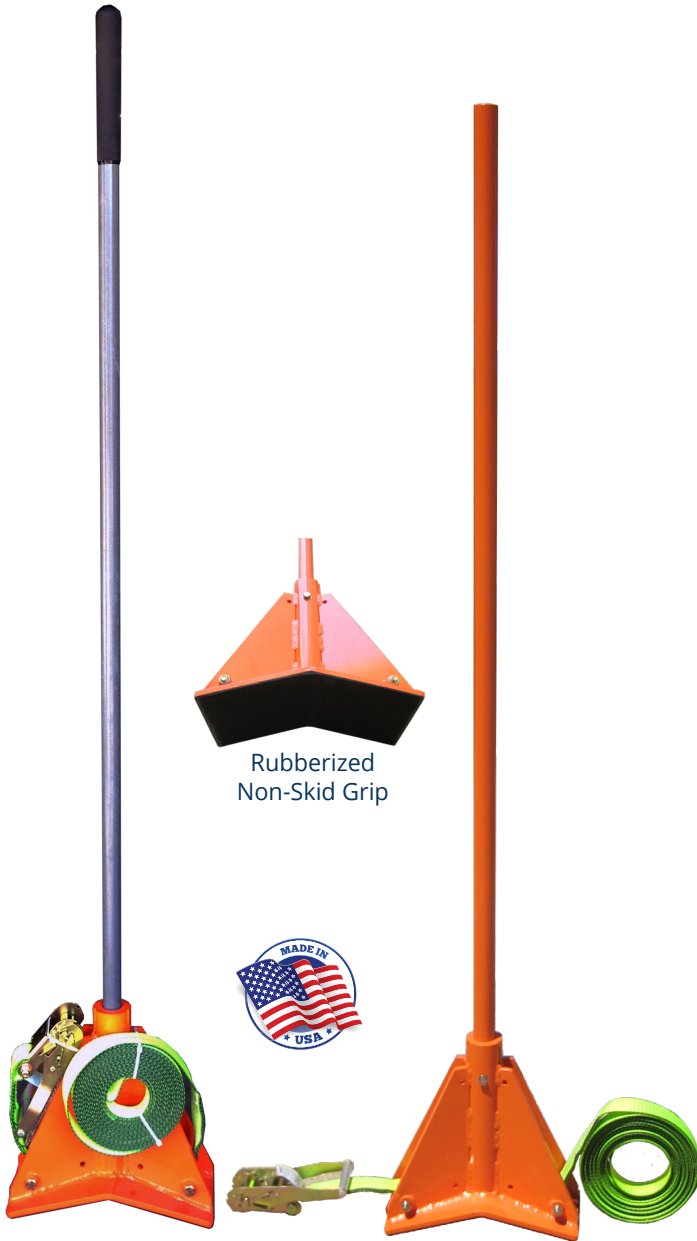


PART #	LEGS	ROPE DIAMETER	LIFTING LEG LENGTH	COLOR	WLL	WEIGHT
DNTS78PM-4-HD	4	7/8"	88"	Black	20,000 lbs.	37 lbs.

POLE PULLING & SETTING

TRANSMISSION POLE CANT HOOK

- Lightweight aluminum head
- Textured rubber V-face to minimize slip
- Equipped with a 30' nylon strap



Rubberized
Non-Skid Grip

PART #	HANDLE	L	W
DNTPCH	Steel 1-1/2" diameter	75"	40 lbs.
DNTPCH-F	Fiberglass 1-1/2" diameter	75"	25 lbs.

PULLING EYE

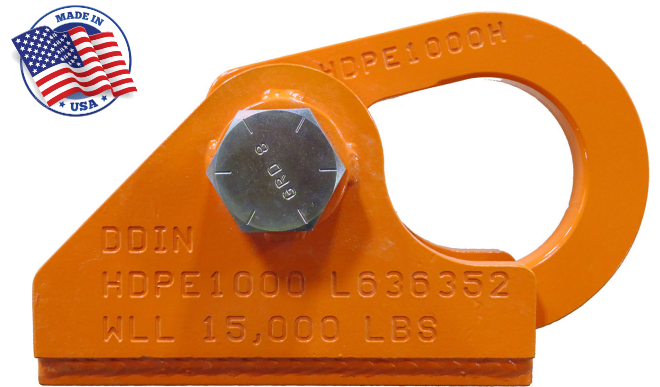
- Safety Factor: 5:1



PART #	FITS ANCHOR ROD SIZE	WLL	WEIGHT
DNPE-1	Adjustable 1/2" to 1"	6,000 lbs.	5 lbs.
DNPE-1BN	Replacement Bolt		
DNPE-1W	Replacement Wedge		

HEAVY-DUTY PULLING EYE

- Safety Factor: 5:1



PART #	FITS ANCHOR ROD SIZE	WLL	WEIGHT
DNHDPE-1000	1"	15,000 lbs.	10.75 lbs.
DNHDPE-1250	1-1/4"	15,000 lbs.	12 lbs.
DNHDPE-1500	1-1/2"	15,000 lbs.	12 lbs.
DNHDPE-1750	1-3/4"	15,000 lbs.	12.75 lbs.
DNHDPE-2000	2"	15,000 lbs.	18.75 lbs.
DNHDPE-2250	2-1/4"	15,000 lbs.	19.75 lbs.

GROUNDING ACCESSORIES

GROUND FLAGS

- Two reflective strips on the front and back
- Hook and loop strap attachment with grommet hole
- PVC rods at the top and bottom of the flag for rigidity
- Wind-resistant style offers 18" wind slits and a 2" wide hook and loop strap

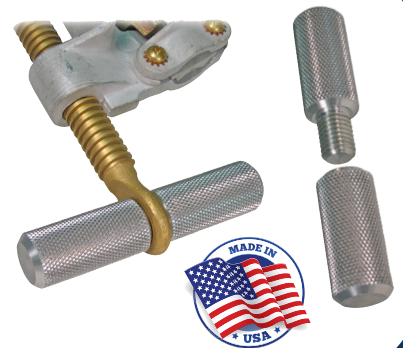
PART #	STYLE	COLOR
DNGF1618	Standard	Hi-Visibility Orange
DNGF1618-LG	Standard	Hi-Visibility Green
DNGF1618-W	Wind Resistant	Hi-Visibility Orange



T-HANDLE ADAPTER

- Converts the shotgun eye of a ground clamp into a T-Handle
- Two-piece screw-together design
- Made from aluminum alloy
- Knurled surface finish for added grip

PART #	WEIGHT
DNGCTH	0.30 lb.



SCREW GROUND ROD

- Temporary ground rod
- Bronze cast auger and T-handle
- 5/8" Copper clad rod

PART #	LENGTH	WEIGHT
DNTGR	6'	7.25 lbs.



GROUND ROD DRIVER

- Simple design and function
- Hammer action
- Double-D shaped urethane washer prevents sliding rod from coming out during operation

PART #	LENGTH	STROKE	WEIGHT
DNMGRD-2	33"	29"	24 lbs.



CONDUCTOR TRIMMERS

DDIN Conductor Trimmers are used to quickly and accurately remove the aluminum stranding from around the steel core of ACSR, ACSS, and other types of conductor without harming the inner steel strands. Constructed of high strength aluminum alloy and operating like a tubing cutter, the PSC tools are strong, lightweight and easy to use.

CONDUCTOR TRIMMERS

- Quickly and accurately removes the aluminum stranding around the steel core of conductor, including ACSR & ACSS
- Lightweight and durable
- Made of aluminum alloy
- Operates like tubing cutter
- Bushings can be made to fit any size wire



DNPSC-1

DNPSC-1HD

DNPSC-2HD

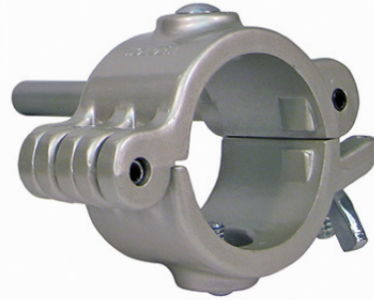
DNPSC-3HD

DNPSC-4HD

PART #	DESCRIPTION	BUSHING STYLE	WEIGHT	KIT INCLUDES
DNPSC-1	Conductor Trimmer	TE	1.65 lbs.	<ul style="list-style-type: none"> • Tool • Bushing Holder • Cutting Wheel • Storage Case (holds 11 bushings)
DNPSC-1HD	Heavy Duty Conductor Trimmer	TE	2.5 lbs.	<ul style="list-style-type: none"> • Tool • Bushing Holder • Cutting Wheel • Cutting Wheel Axle • Storage Case (holds 19 bushings)
DNPSC-2HD	Large Diameter Heavy Duty Conductor Trimmer	TD	2.5 lbs.	<ul style="list-style-type: none"> • Tool • Two (2) Cutting Wheels • Two (2) Cutting Wheel Axles • Storage Case (holds 6 bushings)
DNPSC-3HD	Large Diameter Heavy Duty Conductor Trimmer	TC	2.5 lbs.	<ul style="list-style-type: none"> • Tool • Two (2) Cutting Wheels • Two (2) Cutting Wheel Axles • Storage Case (holds 6 bushings)
DNPSC-4HD	Large Diameter Heavy Duty Conductor Trimmer	TB	2.5 lbs.	<ul style="list-style-type: none"> • Tool • Storage Case



TE STYLE BUSHINGS

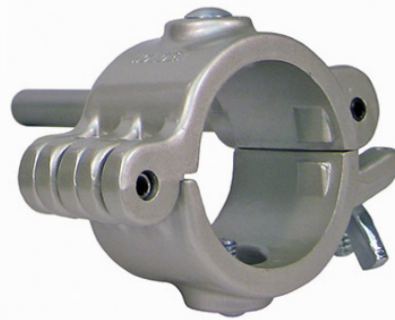


DDIN bushings are precision machined to accurately trim the outer stranding of one particular wire only.

PART #	CIRCULAR MILLS / AWG	STRANDING	CODE WORD	WIRE TYPE
TE5755	4	7/1	Swanate	ACSR
TE5759	1	6/1	Robin	ACSR
TE5761	2/0	6/1	Quail	ACSR
TE5762	3/0	6/1	Pigeon	ACSR
TE5763	4/0	6/1	Penguin	ACSR
TE5764	266.8	18/1	Waxwing	ACSR
TE5766	266.8	26/7	Partridge	ACSR/ACSS
TE5767	300	26/7	Ostrich	ACSR/ACSS
TE5768	336.4	18/1	Merlin	ACSR
TE5769	336.4	26/7	Linnet	ACSR/ACSS
TE5770	336.4	30/7	Oriole	ACSR/ACSS
TE5771	397.5	18/1	Chickadee	ACSR
TE5772	397.5	24/7	Brant	ACSR/ACSS
TE5773	397.5	26/7	Ibis	ACSR/ACSS
TE5774	397.5	30/7	Lark	ACSR/ACSS
TE5775	477	18/1	Pelican	ACSR
TE5776	477	24/7	Flicker	ACSR/ACSS
TE5777	477	26/7	Hawk	ACSR/ACSS
TE5778	477	30/7	Hen	ACSR/ACSS
TE5779	556.5	18/1	Osprey	ACSR
TE5780	556.5	24/7	Parakeet	ACSR/ACSS
TE5781	556.5	26/7	Dove	ACSR/ACSS
TE5782	556.5	30/7	Eagle	ACSR/ACSS
TE5784	605	26/7	Squab	ACSR/ACSS

Bushings can be made to fit any size wire

TE STYLE BUSHINGS

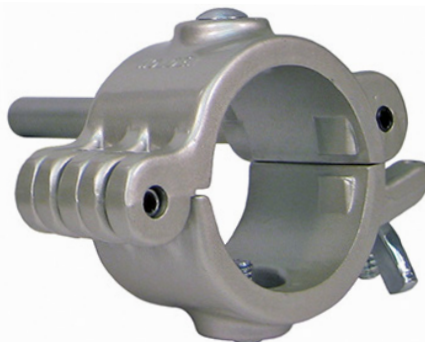


DDIN bushings are precision machined to accurately trim the outer stranding of one particular wire only.

PART #	CIRCULAR MILLS / AWG	STRANDING	CODE WORD	WIRE TYPE
TE5785	605	30/19	Teal	ACSR/ACSS
TE5786	636	36/1	Swift	ACSR
TE5787	636	18/1	Kingbird	ACSR
TE5788	636	24/7	Rook	ACSR
TE5789	636	26/7	Grosbeak	ACSR/ACSS
TE5790	636	30/19	Egret	ACSR/ACSS
TE5791	653.9	18/3		ACSR
TE5792	666.6	24/7	Flamingo	ACSR/ACSS
TE5793	715.5	24/7	Stilt	ACSR/ACSS
TE5794	715.5	26/7	Starling	ACSR/ACSS
TE5795	715.5	30/19	Redwing	ACSR/ACSS
TE5796	795	36/1	Coot	ACSR
TE5797	795	45/7	Tern	ACSR/ACSS
TE5799	795	54/7	Condor	ACSR/ACSS
TE5800	795	26/7	Drake	ACSR/ACSS
TE5801	795	30/19	Mallard	ACSR/ACSS
TE5802	900	45/7	Ruddy	ACSR/ACSS
TE5803	900	54/7	Canary	ACSR/ACSS
TE5804	954	36/1	Catbird	ACSR
TE5805	954	45/7	Rail	ACSR/ACSS
TE5806	954	54/7	Cardinal	ACSR/ACSS
TE5808	1033.5	45/7	Ortolan	ACSR/ACSS
TE5809	1033.5	54/7	Curlew	ACSR/ACSS

Bushings can be made to fit any size wire

TE STYLE BUSHINGS

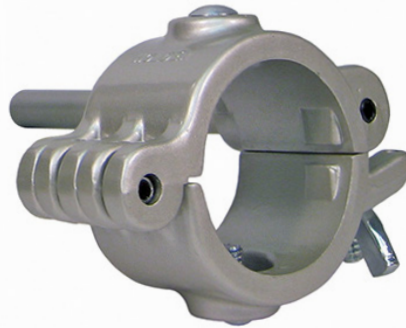


DDIN bushings are precision machined to accurately trim the outer stranding of one particular wire only.

PART #	CIRCULAR MILLS / AWG	STRANDING	CODE WORD	WIRE TYPE
TE5810	1113	45/7	Bluejay	ACSR/ACSS
TE5811	1113	54/19	Finch	ACSR/ACSS
TE5812	1192.5	45/7	Bunting	ACSR/ACSS
TE5813	1192.5	54/19	Grackle	ACSR
TE5814	1272	45/7	Bittern	ACSR/ACSS
TE5815	1272	54/19	Pheasant	ACSR/ACSS
TE5816	1351.5	45/7	Dipper	ACSR/ACSS
TE5817	1351.5	54/19	Martin	ACSR/ACSS
TE5818	1431	45/7	Bobolink	ACSR/ACSS
TE5819	1431	54/19	Plover	ACSS
TE5820	1510	45/7	Nuthatch	ACSS
TE5821	1510	54/19	Parrot	ACSS
TE5822	1590	45/7	Lapwing	ACSR/ACSS
TE5823	1590	48/7	Hornbill	ACSR-AW
TE5824	1780	84/19	Chukar	ACSR/ACSS
TE5825	80	8/1	Grouse	ACSR
TE5826	101.8	12/7	Petrel	ACSR
TE5827	110.8	12/7	Minorca	ACSR
TE5828	134.6	12/7	Leghorn	ACSR
TE5829	159	12/7	Guinea	ACSR
TE5830	176.9	12/7	Dotterel	ACSR
TE5831	190.8	12/7	Dorking	ACSR
TE5832	211.3	12/7	Cochin	ACSR
TE5842	605	24/7	Peacock	ACSR/ACSS

Bushings can be made to fit any size wire

TE STYLE BUSHINGS

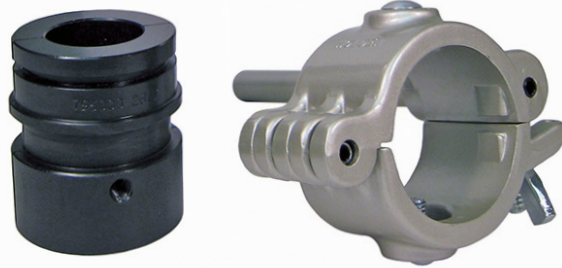


DDIN bushings are precision machined to accurately trim the outer stranding of one particular wire only.

PART #	CIRCULAR MILLS / AWG	STRANDING	CODE WORD	WIRE TYPE
TE6203	477	14/1	Hawk	ACSR-TW/ACSS-TW
TE6204	556.5	18/7	Parakeet	ACSR-TW/ACSS-TW
TE6205	556.5	20/7	Dove	ACSR-TW/ACSS-TW
TE6208	636	20/7	Grosbeak	ACSR-TW/ACSS-TW
TE6212	795	20/7	Drake	ACSR-TW/ACSS-TW
TE6215	954	20/7	Cardinal	ACSR-TW/ACSS-TW
TE6218	1033.5	20/7	Curlew	ACSR-TW/ACSS-TW
TE6224	1192.5	38/19	Grackle	ACSR-TW/ACSS-TW
TE6229	1272	35/7	Bittern	ACSR-TW/ACSS-TW
TE6227	1272	39/19	Pheasant	ACSR-TW/ACSS-TW
TE6229	1351	39/19	Martin	ACSR-TW/ACSS-TW
TE6230	1431	36/7	Bobolink	ACSR-TW/ACSS-TW
TE6233	1590	42/19	Falcon	ACSR-TW/ACSS-TW
TE6234	1789	37/19	Chukar	ACSR-TW/ACSS-TW
TE6235	2156	64/19	Bluebird	ACSS-TW/ACSS-TW
TE6237	571.7	18/7	Mohawk	ACSR-TW/ACSS-TW
TE6238	565.3	18/7	Calumet	ACSR-TW/ACSS-TW
TE6240	664.8	20/7	Oswego	ACSR-TW/ACSS-TW
TE6242	768.2	20/7	Maumee	ACSR-TW/ACSS-TW
TE6243	762.8	20/7	Wabash	ACSR-TW/ACSS-TW
TE6245	946.7	35/7	Fraser	ACSR-TW/ACSS-TW
TE6247	959.6	22/7	Suwannee	ACSR-TW/ACSS-TW
TE6249	1158	33/7	Genesee	ACSR-TW/ACSS-TW
TE6250	1158.4	26/7	Hudson	ACSR-TW/ACSS-TW

Bushings can be made to fit any size wire

TE STYLE BUSHINGS



DDIN bushings are precision machined to accurately trim the outer stranding of one particular wire only.

PART #	CIRCULAR MILLS / AWG	STRANDING	CODE WORD	WIRE TYPE
TE6253	1233.6	38/19	Yukon	ACSR-TW/ACSS-TW
TE6259	1433.6	39/19	Merrimack	ACSR-TW/ACSS-TW
TE6261	1557.4	36/7	Potomac	ACSR-TW/ACSS-TW
TE6262	1533.3	39/19	Rio Grande	ACSR-TW/ACSS-TW
TE6264	1622	39/19	Pecos	ACSR-TW/ACSS-TW
TE6267	1949.6	42/7	Athabaska	ACSR-TW/ACSS-TW
TE6268	1926.9	42/19	Cumberland	ACSR-TW/ACSS-TW
TE6277	636	18/7	Scoter	ACSS-TW/HS285
TE6280	795	17/7	Toutle	ACSR-TW
TE6281	795	20/7	Mallard	ACSS-TW
TE6306	636	20/7	Grosbeak	ACSS-TW
TE6322	1192.5	38/19	Grackle	ACSS-TW
TE6339	762.8	20/7	Wabash	ACSS-TW
TE6344	1168.1	30/7	Cheyenne	ACSS-TW
TE6346	1158.4	26/7	Hudson	ACSS-TW
TE6350	1372.5	30/7	Truckee	ACSS-TW
TE6351	1359.7	36/7	Mackenzie	ACSS-TW
TE6352	1334.6	39/19	Thames	ACSS-TW
TE6355	1433.6	39/19	Merrimack	ACSS-TW
TE6365	2153.8	64/19	Powder	ACSS-TW
TE6375	261.5 mm ²	30/7	Lemon / Darts	ACSR-GZ / ACSR-ACAUSTRIAN
TE7002	20 mm ²	6/1	Squirrel	ACSR BRITISH
TE7004	300 mm ²	30/7	Goat	ACSR BRITISH
TE7006	40 mm ²	7/1	Ferret	ACSR BRITISH

Bushings can be made to fit any size wire

TE STYLE BUSHINGS



PART #	CIRCULAR MILLS / AWG	STRANDING	CODE WORD	WIRE TYPE
TE7008	60 mm ²	7/1	Mink	ACSR BRITISH
TE7009	60 mm ²	12/7	Skunk	ACSR BRITISH
TE7010	400 mm ²	54/7	Zebra	ACSR BRITISH
TE7012	75 mm ²	6/1	Raccoon	ACSR BRITISH
TE7015	100 mm ²	6/1	Hare	ACSR BRITISH
TE7016	100 mm ²	6/7	Dog	ACSR BRITISH
TE7017	100 mm ²	7/7	Hyena	ACSR BRITISH
TE7019	125 mm ²	26/7	Coyote	ACSR BRITISH
TE7021	150 mm ²	30/7	Wolf	ACSR BRITISH
TE7022	175 mm ²	30/7	Lynx	ACSR BRITISH
TE7024	225 mm ²	30/7	Lion	ACSR BRITISH
TE7025	250 mm ²	30/7	Bear	ACSR BRITISH
TE7029	350 mm ²	54/7	Bison	ACSR BRITISH
TE7039	300 mm ²	18/7	Batang	ACSR BRITISH
TE7210	443.1 mm ²	13/7	Crane	ACSR CANADIAN
TE7262	644.5 mm ²	42/7	Scissortail	ACSR CANADIAN
TE7290	316.1 mm ²	48/7	Peace	ACSR CANADIAN

Bushings can be made to fit any size wire





PSC-2HD TD STYLE BUSHINGS



DDIN bushings are precision machined to accurately trim the outer stranding of one particular wire only.

PART #	CIRCULAR MILLS / AWG	STRANDING	CODE WORD	WIRE TYPE
TD1604	1843	72/7		1.6 COMPACT
TD1605	2156	84/19	Bluebird	ACSR/ACSS
TD1608	2332.8	72/19		
TD1609	2167	72/7	Kiwi	ACSR/ACSS
TD1610	2034.5	72/7	Mockingbird	ACSS
TD1611	2493	54/37		
TD1612	2070	92/19		AACSR
TD1615	2312	76/19	Thrasher	ACSS
TD1616	25150	76/19		
TD1621	460.7 mm ²	28/19	573 R	ACSS/TW
TD1623	711.4 mm ²	29/19	883 R	ACSS/TW
TD1630	1851-T13	54/19		ACCR
TD5822	1590	45/7	Lapwing	ACSR/ACSS
TD5823	1590	48/7	Hornbill	ACSR/AW
TD5824	1780	84/19	Chukar	ACSR/ACSS
TD5860	1590	54/19	Falcon	ACSR/ACSS
TD62BPA	1519	30/7	Deschutes	ACSR-TW

PSC-3HD TC STYLE BUSHINGS

PART #	CIRCULAR MILLS / AWG	STRANDING	CODE WORD	WIRE TYPE
TC1619	2627.3	64/19	Santee	ACSR TW/ACSS TW
TC1625	460.7 mm ²	48/37	1317R	ACSS/TW
TC1626	536 mm ²	28/19	687R	ACSS/TW

PSC-4HD TB STYLE BUSHINGS

PART #	CIRCULAR MILLS / AWG	STRANDING	CODE WORD	WIRE TYPE
TB1600	3633	110/7		ACSR

Bushings can be made to fit any size wire

60 TON COMPRESSION DIES



PART #	INDEX #
DN6007CD	07CD
DN6008CD	08CD
DN6009CD	09CD
DN6010CD	10CD
DN6010SH	10SH
DN6011AH	11AH
DN6011CD	11CD
DN6012CD	12CD
DN6012SH	12SH
DN6013AH	13AH
DN6013CD	13CD
DN6014CD	14CD
DN6014SH	14SH
DN6015AH	15AH
DN6015CD	15CD
DN6016CD	16CD
DN6016SH	16SH
DN6017CD	17CD
DN6018SH	18SH

PART #	INDEX #
DN6020AH	20AH
DN6020SH	20SH
DN6024AH	24AH
DN6027AH	27AH
DN6030AH	30AH
DN6034AH	34AH
DN6036AH	36AH
DN6038AH	38AH
DN6040AH	40AH
DN6073AH	73AH
DN6074AH	74AH
DN6074SH	74SH
DN6075AH	75AH
DN6075SH	75SH
DN6076.1SH	76.1SH
DN6076AH	76AH
DN6076SH	76SH
DN60PRY140	PRY140
DN60PRY243	PRY243

DIE STORAGE CASE

Protective carrying case with foam inserts for die storage

PART #	CAPACITY
DN60-CASE	15 Compression Dies



100 TON COMPRESSION DIES



PART #	INDEX #
DN10007CD	07CD
DN10008CD	08CD
DN10009CD	09CD
DN10010CD	10CD
DN10010SH	10SH
DN10011CD	11CD
DN10012CD	12CD
DN10012SH	12SH
DN10013CD	13CD
DN10014CD	14CD
DN10014SH	14SH
DN10015CD	15CD
DN10016CD	16CD
DN10016SH	16SH

PART #	INDEX #
DN10020CD	20CD
DN10020SH	20SH
DN10024AH	24AH
DN10027AH	27AH
DN10030AH	30AH
DN10034AH	34AH
DN10036AH	36AH
DN10038AH	38AH
DN10040AH	40AH
DN10042AH	42AH
DN10044AH	44AH
DN10048AH	48AH
DN10074AH	74AH
DN10074SH	74SH
DN10075AH	75AH

DIE STORAGE CASE

Protective carrying case with foam inserts for die storage

PART #	CAPACITY
DN100-CASE	8 Compression Dies



WIRE BASKETS & STORAGE ACCESSORIES

STEEL WIRE BASKETS

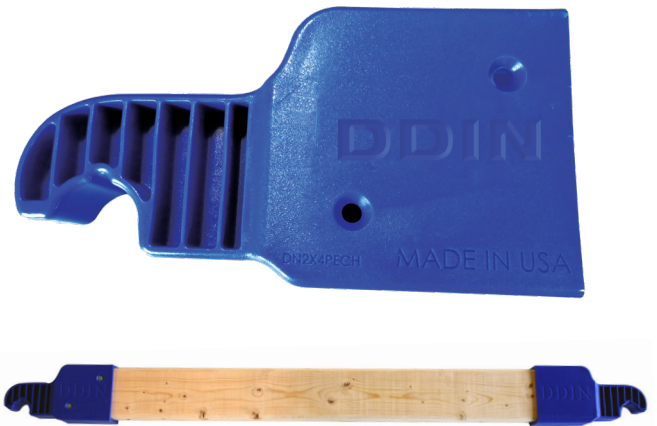
- Zinc plated steel
- Collapsible
- Hinged gate
- Stackable
- Steel plate on gate allows for labeling basket contents



PART #	DIMENSIONS (W x D x H)	WEIGHT (EMPTY)	STANDARD STORAGE USES
DNS3.5-E	47 x 40 x 20	100 lbs.	• (100) Crossarm Brackets
DNS7-E	47" x 40" x 36"	130 lbs.	• (100) 7" Stringing Blocks • (200) Crossarm Brackets • (20) 16" Stringing Blocks • (10) 22" Stringing Blocks
DNS10-E	67" x 44" x 41"	178 lbs.	• (25) 5' Extension Arms • (10) 28" Stringing Blocks
DNS11-E	79" x 43" x 36"	215 lbs.	• (25) 6' Extension Arms
DNS12-E	61" x 39" x 49"	168 lbs.	• (3) 42" Stringing Blocks • (5) 36" Stringing Blocks

PLASTIC END CAP HOOKS

- Neatly stores hot arms in a DNS10 or DNS11 wire basket
- Screws onto the end of a standard 2x4 (can be cut to desired length)
- Sold separately or assembled to fit DDIN wire baskets
- Four (4) needed for a basket carrying (25) hot arms



PART #	DESCRIPTION	SIZE	WEIGHT
DN2X4PECH	Hook Only	7 3/4"	.65 lb.
DN2X4SUPPORT	Assembly	52"	4 lbs.

BLANKET ACCESSORIES

BLANKET CLAMPS

- Holds insulating blankets and rubber cover-ups in place
- Spring operated for tension
- Notched grooves in body prevents line hose from sliding
- Available with shotgun rings

PART #	DESCRIPTION
DNBC-1	Nylon blanket clamp
DNBC-1HS	Nylon blanket clamp with shotgun rings



SLEEVE BUTTONS

- 2-Piece
- High Visibility
- Screw type
- Nylon

PART #	DESCRIPTION
DNB-22	Pack of 4



2-WAY BLANKET BUTTONS

- Secure eyelet-style insulating blankets
- For use with shotgun stick or standard-duty switch stick

PART #	DESCRIPTION
DNB-23	Each



MAGNETIC BLANKET BUTTONS

- Secure eyelet-style insulating blankets
- For hard-to-cover areas
- 4 permanent floating magnets

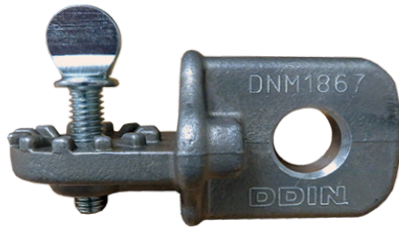
PART #	DESCRIPTION
DNMB-6	Each



ACCESSORIES

UNIVERSAL SHOTGUN ADAPTER

- Converts the hook end of a shotgun stick to a universal fitting



PART #

DNM1867

QUICK CHANGE IMPACT ADAPTERS

Made to withstand the increased torque output of utility impact wrenches



PART #	DESCRIPTION	LENGTH	COLOR
DNIA	7/16" Hex to 1/2" Square	2-3/4"	Red
DNIA1412	1/4" Hex to 1/2" Square	2"	Yellow
DNIA1438	1/4" Hex to 3/8" Square	1-7/8"	Green

UNIVERSAL DISCONNECT HEAD

- For opening and closing switches

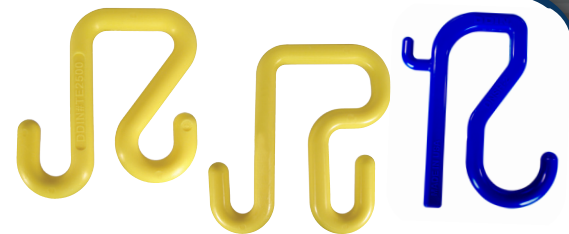


PART #

DNUD-1

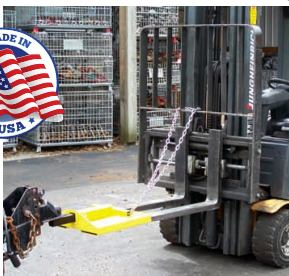
BUCKET HOOKS

- Made of polymer
- Fits most aerial lift truck buckets



PART #	DESCRIPTION	STOCK DIAMETER	COMPATIBLE WITH
DN2500	Yellow Bucket Hook	11/16" Round	2" Bucket lip
DN2502	Yellow Bucket Hook	11/16" Round	3" Bucket lip
DNSH-2	Blue Bucket Hook	11/16" Round	2" Bucket lip

FORK TRUCK HITCH ADAPTER



PART #	WEIGHT	MAXIMUM FORK SIZE
DNFHA	13.75 lbs.	1 3/4" H x 5 5/8" W

MUD BUCKET

- Removes mud, gravel or other debris from deep holes
- Bucket is made from 11-gauge cold rolled steel
- Holds up to 1 gallon
- Lightweight & durable fiberglass handles
- Fiberglass handles telescope from 6' - 12'



PART #	WEIGHT
DN683-H	13.75 lbs.

INDEX



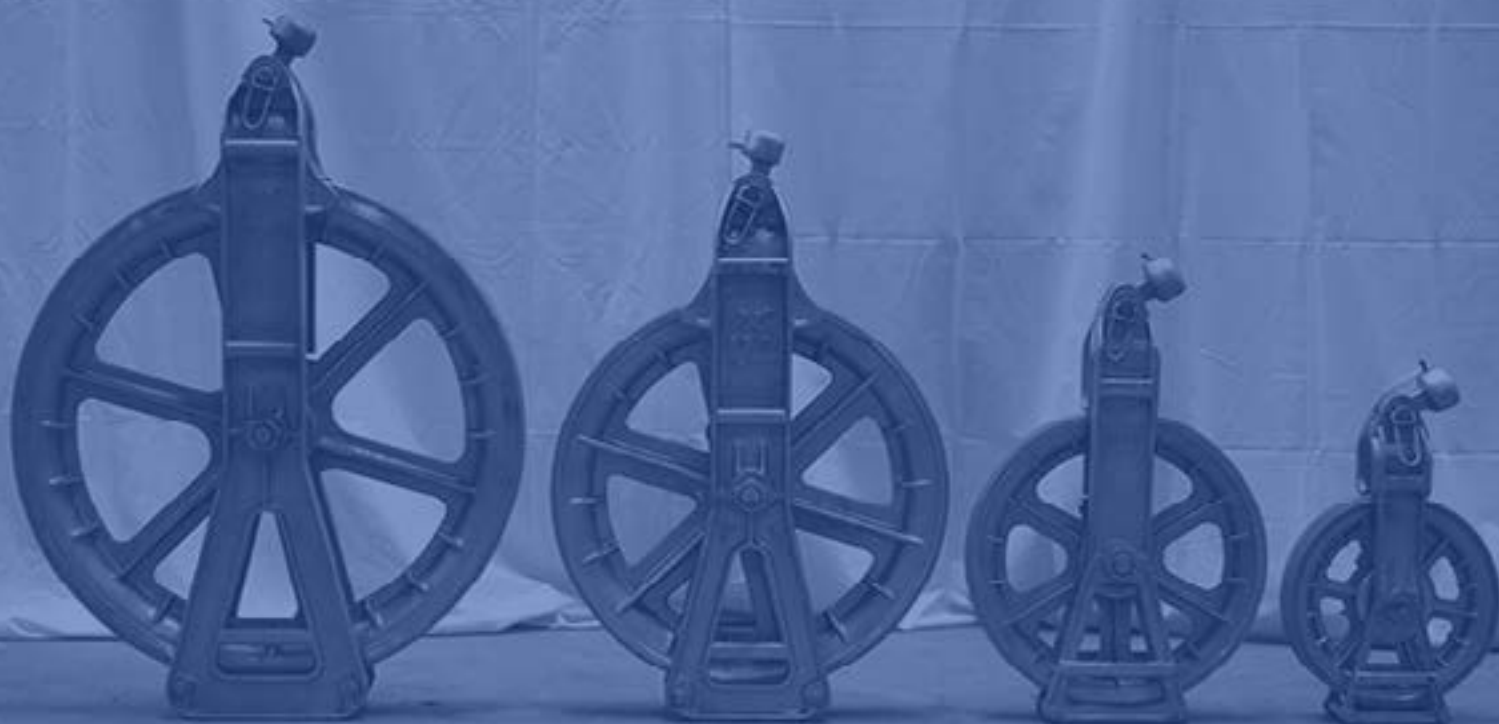
Universal Stringing Blocks	1
Grounded Universal Stringing Blocks.....	2
Universal Helicopter Blocks.....	3
Mounting Brackets	3
Mounting Attachments	4
Stringing Blocks.....	5
Grounded Stringing Blocks.....	6
Helicopter Stringing Blocks	7
Grounded Helicopter Blocks.....	8
Grounding Attachments	9
Uplift/Hold Down Blocks.....	10
Radius Blocks	11
Traveling Grounds	12
Sagging Equipment	13
Handline & Rigging Blocks	14
Handline Hooks.....	15
Transformer Slings	16-18
Pole Pulling & Setting	19
Grounding Accessories.....	20
Conductor Trimmers.....	21
Bushings	22-28
Compression Dies	29-30
Wire Baskets & Storage Accessories	31
Blanket Accessories.....	32
Accessories	33
Impact Adapters.....	33



ACSR WIRE CHART

Code Word	Size (AWG or KCM)	Stranding	Complete Cable Size
Turkey	6	6/1	.198
Swan	4	6/1	.250
Swanate	4	7/1	.257
Sparrow	2	6/1	.316
Sparate	2	7/1	.325
Robin	1	6/1	.355
Raven	1/0	6/1	.398
Quail	2/0	6/1	.447
Pigeon	3/0	6/1	.502
Penguin	4/0	6/1	.563
Waxwing	266.8	18/1	.609
Partridge	266.8	26/7	.642
Ostrich	300.0	26/7	.680
Merlin	336.4	18/1	.684
Linnet	336.4	26/7	.720
Oriole	336.4	30/7	.741
Chickadee	397.5	18/1	.743
Brant	397.5	24/7	.772
Ibis	397.5	26/7	.783
Lark	397.5	30/7	.806
Pelican	477.0	18/1	.814
Flicker	477.0	24/7	.846
Hawk	477.0	26/7	.858
Hen	477.0	30/7	.883
Osprey	556.5	18/1	.879
Parakeet	556.5	24/7	.914
Dove	556.5	26/7	.927
Eagle	556.5	24/7	.953
Peacock	605.0	24/7	.953
Squab	605.0	26/7	.966
Wood Duck	605.0	30/7	.994
Teal	605.0	30/19	.994
Kingbird	636.0	18/1	.940
Swift	636.0	36/1	.940
Rook	636.0	24/7	.978
Grosbeak	636.0	26/7	.990

Code Word	Size (AWG or KCM)	Stranding	Complete Cable Size
Scoter	636.0	30/7	1.019
Egret	636.0	30/19	1.019
Flamingo	666.6	24/7	1.000
Gannet	666.6	26/7	1.014
Stilt	715.5	24/7	1.036
Sterling	715.5	26/7	1.051
Redwing	715.5	30/19	1.081
Coot	795.0	36/1	1.040
Cuckoo	795.0	24/7	1.092
Drake	795.0	26/7	1.108
Tern	795.0	45/7	1.063
Condor	795.0	54/7	1.092
Mallard	795.0	30/19	1.140
Ruddy	900.0	45/7	1.131
Canary	900.0	54/7	1.162
Rail	954.0	45/7	1.165
Cardinal	954.0	54/7	1.196
Ortolan	1033.5	45/7	1.212
Curlew	1033.5	54/7	1.246
Bluejay	1113.0	45/7	1.259
Finch	1113.0	54/19	1.293
Bunting	1192.5	45/7	1.293
Grackle	1192.5	54/19	1.333
Bittern	1272.0	45/7	1.345
Pheasant	1272.0	54/19	1.382
Dipper	1351.5	45/7	1.386
Martin	1351.5	54/19	1.465
Bobolink	1431.0	45/7	1.427
Plover	1431.0	54/19	1.465
Nuthatch	1510.5	45/7	1.466
Parrot	1510.5	54/19	1.545
Lapwing	1590.0	45/7	1.604
Falcon	1590.0	54/19	1.645
Chukar	1780.0	64/19	1.602
Bluebird	2156.0	64/19	1.762
Kiwi	2167.0	72/7	1.735



ORDER DDIN

PRODUCTS FROM

